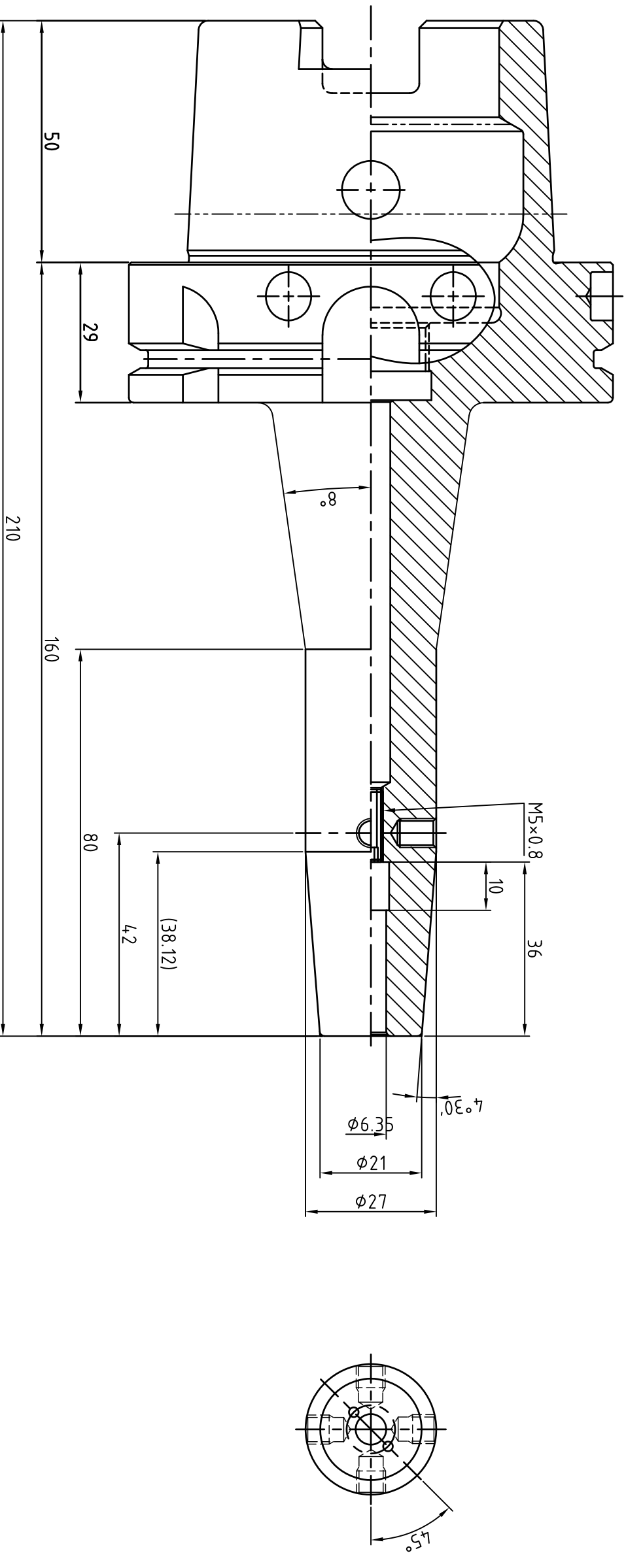


- NOTE
- 1.ROUND R=10
 - 2.BREAK SHARP CORNERS 0.5×45°
 - 3.ANGLES ±0°15'
 - 4.SFH-C ADJUST BOLT(T) : M5×0.8×15L
 - 5.NYLOC BOLT : M4×0.7×4L(AEA)
 - 6.BALANCE : G2.5 / 25,000rpm



MARKING

SSK HSK100A-SFH1/4CTW-6.30
VR060JTW 월/년0일 G2.5/25,000

MATERIAL	REV No.	00	DATE	2021.03.22	표	기 호	Rmax	Ra	Rz	기 본 공 차 (mm)	구 분	1-50	50-100	100-250	250-500	DRAWN	CHECKED	CHECKED	APPROVED
MAT. SIZE	SURFACE TREATMENT				~	▽	-	-	-	내 경	+0.1	+0.15	+0.25	+0.35		Y.H.J			
HARDNESS	KIND	HR C	ASME B5.50 : 2009		▽	▽ ^W	100S	25a	100Z	외 경	-0.1	+0.15	-0.25	-0.35					
DESCRIPTION	SHRINK FIT HOLDER				▽	▽ ^X	25S	63a	25Z	전 장	±0.1	±0.15	±0.25	±0.35					
ORDER MAKER	SAB	OEM CODE	VR060JTW		▽	▽ ^Y	6.3S	1.6a	6.3Z	SCALE	1 : 1								
SPEC.	HSK100A-SFH6.35(1/4")CTW-160(6.3")	TYPE	Machining		▽	▽ ^Z	0.8S	0.2a	0.8Z	Dim.	mm								

SSK
신세기산업주식회사