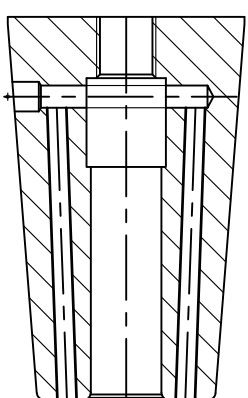


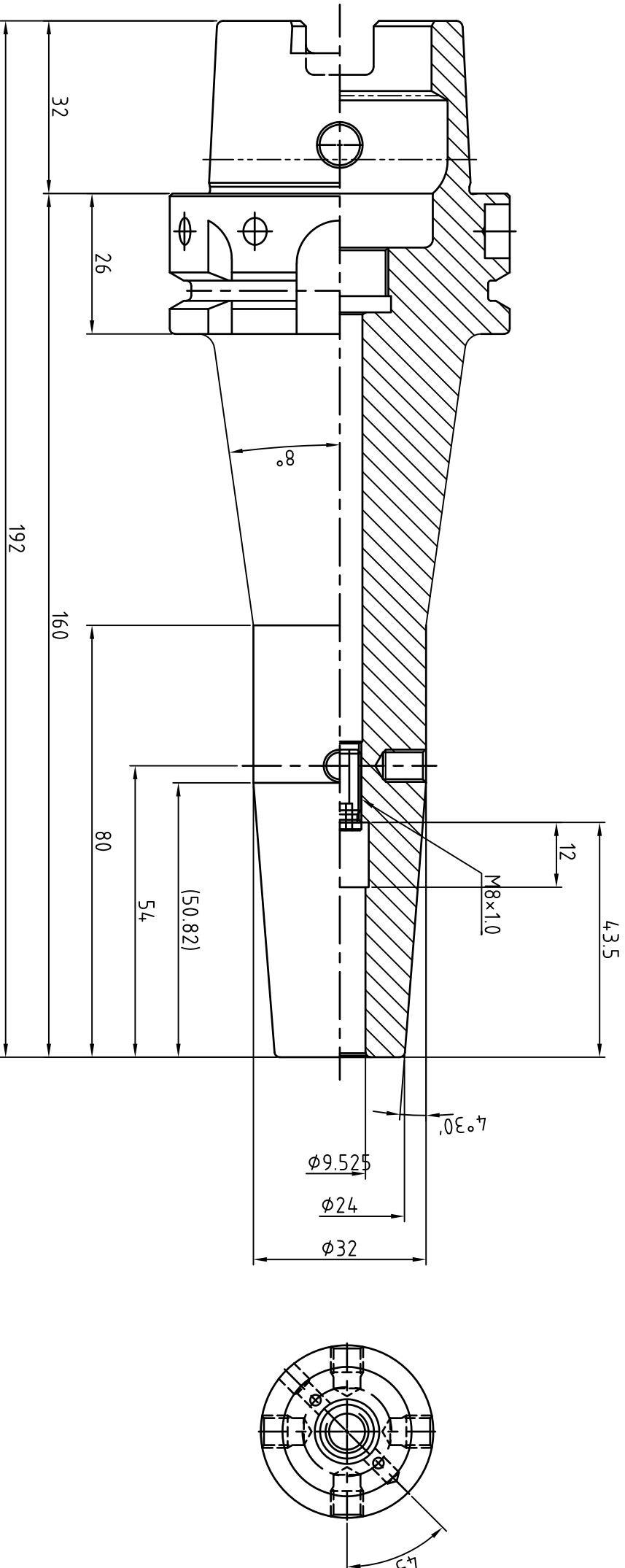
# APPROVAL

DATE

SIGNATURE



- NOTE
- 1.ROUND R=1.0
  - 2.BREAK SHARP CORNERS 0.5x45°
  - 3.ANGLES ±0°15'
  - 4.SFH-C ADJUST BOLT(T) : M8x1.0x15L
  - 5.NYLOC BOLT : M4x0.7x4L(4EA)
  - 6.BALANCE : G2.5 / 25,000rpm



## MARKING

SSK HS100A-SFH3/8CTW-6.30  
VR026JTW 월/년 0일 G2.5/25,000

MATERIAL	REV No.	00	DATE	2021.03.22	표	기 호	Rmax	Ra	Rz	기 본 공 차 (mm)	구 분	1-50	50-100	100-250	250-500	DRAWN	CHECKED	CHECKED	APPROVED
MAT. SIZE	SURFACE TREATMENT				~	▽	-	-	-	내 경	+0.1	+0.15	+0.25	+0.35		Y.H.J			
HARDNESS	KIND	ASME B5.50 : 2009			▽	▽ <sup>W</sup>	100S	25a	100Z	외 경	-0.1	-0.15	-0.25	-0.35					
DESCRIPTION	SHRINK FIT HOLDER				▽	▽ <sup>X</sup>	25S	63a	25Z	전 장	±0.1	±0.15	±0.25	±0.35					
ORDER MAKER	SAB	OEM CODE	VR026JTW		▽	▽ <sup>Y</sup>	6.3S	1.6a	6.3Z	SCALE	1 : 1								
SPEC.	HSK100A-SFH9.525(3/8")CTW-160(6.30")	TYPE	Machining		▽	▽ <sup>Z</sup>	0.8S	0.2a	0.8Z	Dim.	mm								

**SSK**

신세기산업주식회사