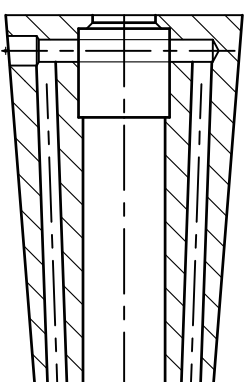


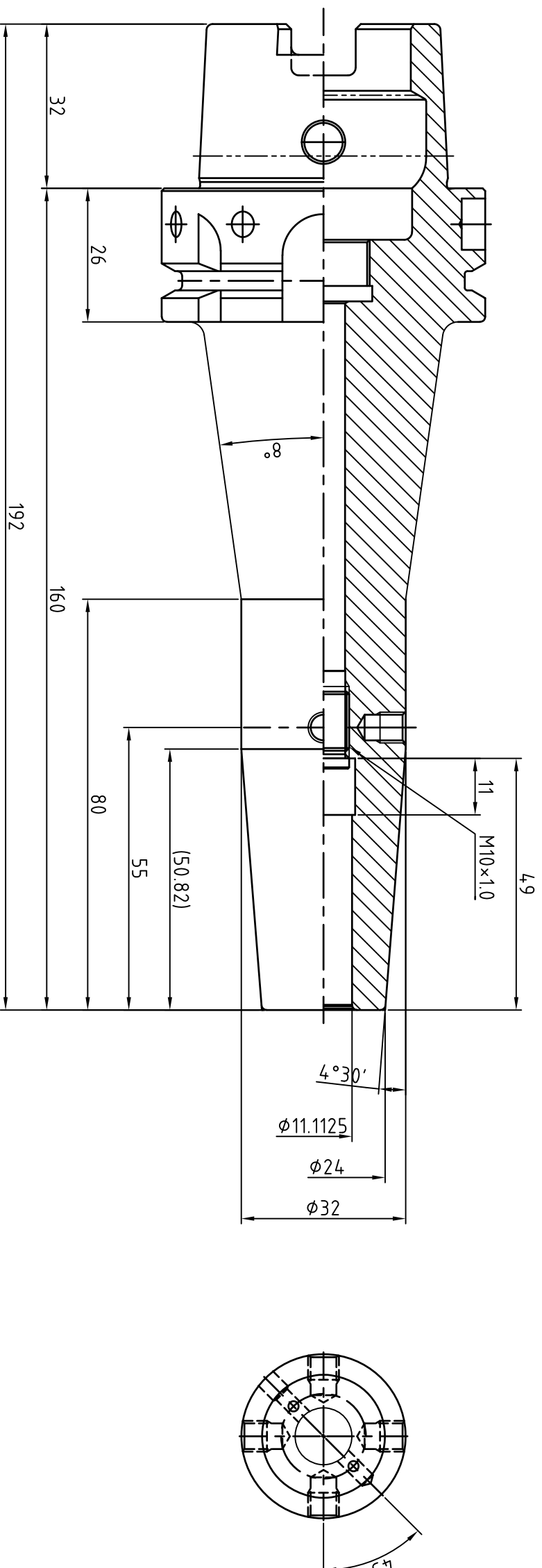
# APPROVAL

DATE

SIGNATURE



- NOTE
- 1.ROUND R=10
  - 2.BREAK SHARP CORNERS 0.5x45°
  - 3.ANGLES ±0°15'
  - 4.SFH-C ADJUST BOLT(T) : M10x1.0x15L
  - 5.NYLOC BOLT : M4x0.7x4L(4EA)
  - 6.BALANCE : G2.5 / 25,000rpm



<b>MARKING</b>	
	HSK63A-SFH1/16CTW-6.30
	VQ062JTW 월/년0일 G2.5/25,000

MATERIAL	REV No.	00	DATE	2021.03.19	표	기	호	Rmax	Ra	Rz	기	본	구	1-50	50-100	100-250	250-500	DRAWN	CHECKED	CHECKED	APPROVED
MAT. SIZE	SURFACE TREATMENT				~	▽	▽	-	-	-	차	내	경	+0.1	+0.15	+0.25	+0.35	Y.H.J			
HARDNESS	KIND	ASME B5.50	2009		▽	▽ <sup>W</sup>	▽ <sup>25</sup>	100S	25a	100Z	(mm)	외	경	-0.1	-0.15	-0.25	-0.35				
DESCRIPTION	SHRINK FIT HOLDER				▽	▽ <sup>X</sup>	▽ <sup>63</sup>	25S	63a	25Z	전	장		±0.1	±0.15	±0.25	±0.35				
ORDER MAKER	SAB	OEM CODE	VQ062JTW		▽	▽	▽ <sup>19</sup>	6.3S	1.6a	6.3Z	SCALE			1 : 1							
SPEC.	HSK63A-SFH11.1125(7/16")CTW-160(6.30")	TYPE	Machining		▽	▽	▽ <sup>2</sup>	0.8S	0.2a	0.8Z	Dim.			mm							