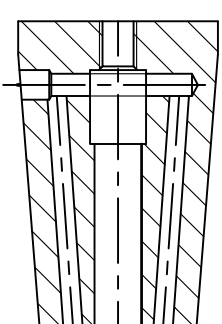


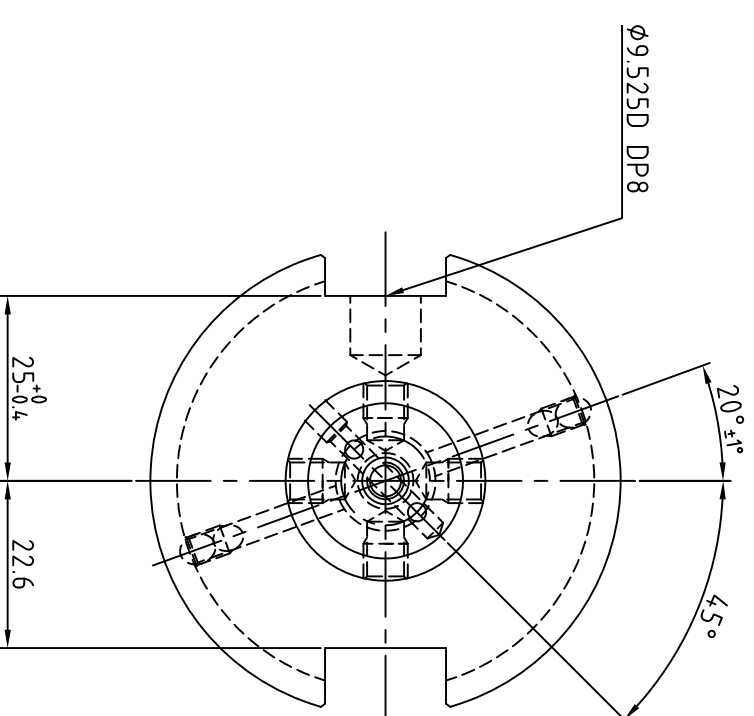
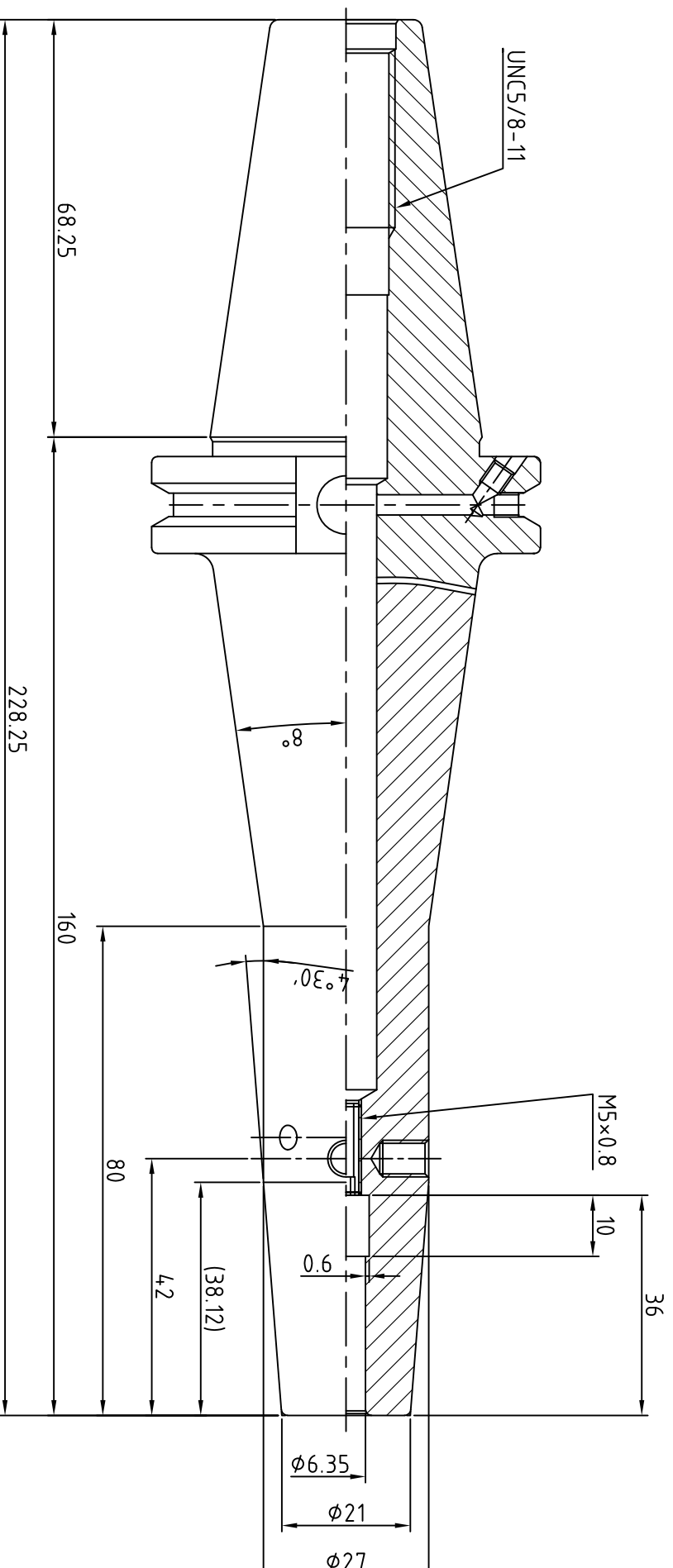
APPROVAL

DATE

SIGNATURE



- NOTE
- 1.ROUND R=1.0
 - 2.BREAK SHARP CORNERS 0.5×45°
 - 3.ANGLES ±0°15'
 - 4.SFH-C ADJUST BOLT(T) : M5×0.8×15L
 - 5.NYLOC BOLT : M4×0.7×4L(4EA)
 - 6.BALANCE : G2.5 / 25,000rpm



MARKING

SKK CAT40AD/B-SFH1/4CTW-6.30
VK026JTW 월/년0일 G2.5/25,000

MATERIAL	REV No.	00	DATE	2021.03.19	표	기	호	Rmax	Ra	Rz	기	본	구	1-50	50-100	100-250	250-500	DRAWN	CHECKED	CHECKED	APPROVED
MAT. SIZE	SURFACE TREATMENT				~	▽	▽	-	-	-	차	내	경	+0.1	+0.15	+0.25	+0.35	Y.H.J			
HARDNESS	KIND	ASME B5.50	2009		▽	▽	▽	100S	25a	100Z	(mm)	외	경	-0.1	+0.15	-0.25	-0.35				
DESCRIPTION	SHRINK FIT HOLDER				▽	▽	▽	25S	63a	25Z	SCALE	전	장	±0.1	±0.15	±0.25	±0.35				
ORDER MAKER	SAB	OEM CODE	VK026JTW		▽	▽	▽	6.3S	1.6a	6.3Z	Dim.			1 : 1							
SPEC:	CAT40AD/B-SFH6.35(1/4")CTW-160(6.3")	TYPE	Machining		▽	▽	▽	0.8S	0.2a	0.8Z	mm										

신세기산업주식회사
SSK